



京都精華大学 国際マンガ研究センター
KYOTO SEIKA UNIVERSITY
INTERNATIONAL MANGA RESEARCH CENTER



© Watanabe Masako

Exhibition
Shojo Manga
An Introduction

Opening on Friday, 21st February 2020 at 5 pm

On View till Saturday, 18th April 2020

11am to 7pm

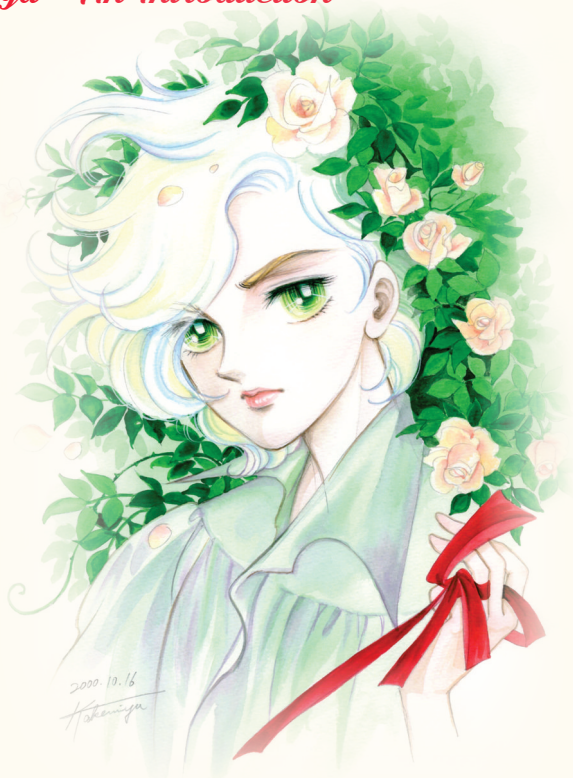
at The Japan Foundation, New Delhi

(Closed on Sundays and Public Holidays)

Entry Free

Shojo Manga - An Introduction

Shojo manga is a genre of Japanese manga, and the term means comics for young girls. While 'genres' are usually based on themes in the West, manga genres are categorized according to the age and gender of readers, and to content of the manga, to some extent. Additionally, the age and gender of readers also determine to a certain degree what kinds of themes are used in genre, and how these themes are handled. Many works are drawn with a beautiful, dazzling style, and artists place much importance on fashion, drawing their characters in trendy clothes and accessories, embodying every girl's dreams. Aside from the detailed art, readers are also fascinated by the sensible portrayal of emotions.



© Takemiya Keiko

Special Event

by curators of Kyoto International Manga Museum

Workshops

Friday, 21st February 2020 at 7pm

Saturday, 22nd February 2020 at 11am

Lecture

Saturday, 22nd February 2020 at 4pm

- ★ Workshops require registration.
Please go to the registration form through QR code.
- ★ Lecture will be on “First Come, First Served” basis
- ★ Workshops and Lecture are Free of Charge.



Manga

What should be regarded as the origin of manga? Should it be *Choju Jimbutsu Giga* (Scroll of Frolicking Animals and Humans) from the late Heian period (the end of the 12th century), or pre-historic cave paintings from even further back? At Kyoto International Manga Museum, they focus on history of the modern period. It is the period when mass-produced media, like magazines and newspapers, emerged due to the development of printing techniques and the media connected a numerous readers. It was the appearance of this type of media that facilitated the growth of manga into a form of popular entertainment.

What is Genga' (Dash)?

Genga is the original of Manga artists' works. The aim of the Genga' (Dash) project is the "archival without alteration of the information that original pictures hold" and it is this point which differentiates a Genga'(Dash) from other reproductions. Other reproduction techniques clean up dirt and damage, and correct the color and luminosity of the original artwork but Genga' (Dash) reproduce the current state of the work, even reproductions dirt, damage, irregularities in the brushwork and nuances in the blank paper. These marks left on the artwork allow us to catch a glimpse behind the scenes of the artists' work and show us the historical background, and as such the documents can be thought of as precious traces in time. The principles of Genga' (Dash) are that the data must be true to the original artwork, and color adjustments are made in direct comparison against the original.



Featured Manga Artists



© Ueda Toshiko

UEDA TOSHIKO

Born in Tokyo. At the age of 17, Ueda began learning illustration and manga art from Matsumoto Katsuji, a Japanese illustrator. During World War II, Ueda worked for a newspaper company in former Manchuria (northeast region of China). After the war, she began creating picture stories and manga.

WATANABE MASAKO

Born in 1929 in Tokyo. Watanabe made her debut in 1952 with “Shokoshi”, (Little Lord Fauntleroy). She produced *kashihon* (rental book) manga, and her series “Yamabiko shojo” was published in *Shojo Club* from 1957. She won popularity through a gorgeous painting style that her readers yearned for, and her dramatic stories that depicted girls beset by misfortune.



© Watanabe Masako



© Takemiya Keiko

TAKEMIYA KEIKO

Born in Tokushima prefecture. “Kokonotu no yujo”, created by Takemiya, was published in *COM (Magazine)* in 1967, and the next year she debuted professionally with “Ringo no tsumi” (Sin of the apple) in Weekly Magazine *Margaret*. “The Poem of Wind and Trees”, themed *Shonenai* (love between boys), has been considered a masterpiece of human drama since its release and influenced the next generation of shojo manga.

For more details contact us at :

The Japan Foundation, New Delhi

5A, Ring Road, Lajpat Nagar -IV, New Delhi-110024, India, Near Moolchand Metro Station

Tel: +91-(0)11-2644-2968/69/71/72 ; Fax: +91-(0)11-4172-9128 ; Email : query@jfindia.org.in ; Web : www.jfindia.org.in

 The Japan Foundation, New Delhi

 @JFNewDelhi  jfnd_india